

# MF 430 SERIES

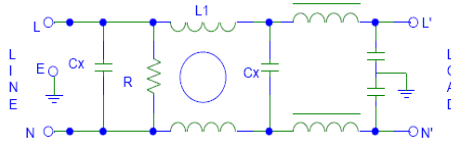


## Features

- Superior performance
- Rated currents up to 50 A
- Medical versions available
- High conducted attenuation performance
- Screw Mount

## Technical Specification

- Maximum Operating Voltage: 250 VAC
- Operating Frequency: 50/60Hz
- Rated Current: 1A to 50A
- High Potential test voltage:  
L to G 2120VAC FOR 250V  
L to L 1414VDC FOR 250V
- Overload Capability: 6 x Rated current for 8sec
- Temperature Range :-25 °C to 85 °c
- Earth Leakage Current : 1 mA max  
(Also available in low leakage Current)



## Application

- Power systems
- Electronic equipment
- Frequency converters
- SMPS
- Elevators
- Power plants
- Escalator
- Dumbwaiters

## Presentation

Nickel Plated metal case/Aluminium

## Mounting

Screw Mount or Panel Mount

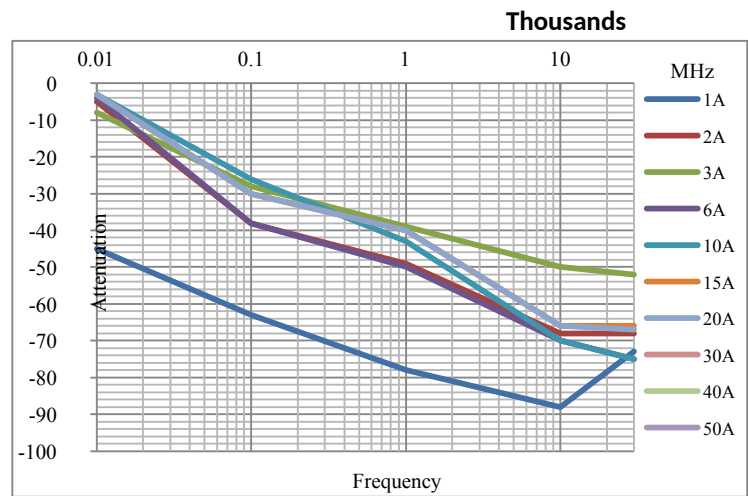
## Termination

Fastons or Cable or Screw

## How to Order

| Part No.  | Rated Current (Amps) | Case               | Termination   |
|-----------|----------------------|--------------------|---------------|
| MF 430-01 | 1A                   | <a href="#">E</a>  | Fastons/Cable |
| MF 430-02 | 2A                   | <a href="#">E</a>  | Fastons/Cable |
| MF 430-03 | 3A                   | <a href="#">H2</a> | Fastons/Cable |
| MF 430-06 | 6A                   | <a href="#">H2</a> | Fastons/Cable |
| MF 430-10 | 10A                  | <a href="#">H</a>  | M5Screw/Cable |
| MF 430-15 | 15A                  | <a href="#">K2</a> | M5Screw/Cable |
| MF 430-20 | 20A                  | <a href="#">K2</a> | M5Screw/Cable |
| MF 430-30 | 30A                  | <a href="#">SX</a> | M5Screw/Cable |
| MF 430-40 | 40A                  | <a href="#">SX</a> | M5Screw/Cable |
| MF 430-50 | 50A                  | <a href="#">PX</a> | M5Screw/Cable |

## Insertion Loss



\*\* For Customised filter Contact our sales department