

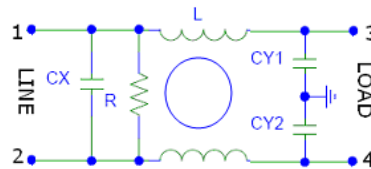
## Features

- Integral IEC Connector
- Excellent performance/size ratio
- One or Two Fuse Option
- Rated currents up to 6 A
- Medical versions available
- High conducted attenuation performance
- Snap-in or Screw Mount

## Technical Specification

- Maximum Operating Voltage: 250 VAC
- Operating Frequency: 50/60Hz
- Rated Current: 1A to 6 A
- High Potential test voltage:  
L to G 2120VDC FOR 250V  
L to L 1414VDC FOR 250V
- Overload Capability: 6 x Rated current for  
8sec
- Temperature Range :-25 °C to 85 °c
- Earth Leakage Current : 1 mA max  
(Also available in low leakage Current)

## MF 310 SERIES



## Application

- Integral IEC Connector
- All IEC Inlet Connector
- Medical application
- Computers
- Test and measurement equipment
- Portable electrical and electronic equipment
- Household equipment
- Rack mounting equipment

## Presentation

Aluminium

## Mounting

Screw Mount or Panel Mount

## Termination

Fastons 6.3 X 0.8 mm

## How to Order

Part No.	Current Rating (Amps)	Leakage Current (mA)
MF 310-01-X	1A	<1mA
MF 310-03-X	3A	<1mA
MF 310-06-X	6A	<1mA

\*\* For Customised filter Contact our sales department

## Insertion Loss

