

Features

Excellent performance/size ratio
 Rated currents up to 15 A
 Medical versions available
 High conducted attenuation performance

Technical Specification

Maximum Operating Voltage: 250 VAC
 Operating Frequency: 50/60Hz
 Rated Current: 1A to 15 A
 High Potential test voltage:
 L to G 2120VDC FOR 250V
 L to L 1414VDC FOR 250V
 Overload Capability: 6 x Rated current for
 8sec
 Temperature Range :-25 °C to 85 °c
 Earth Leakage Current : 1 mA max
 (Also available in low leakage Current)



Application

Integral IEC Connector
 All IEC Inlet Connector
 Medical application
 Computers
 Test and measurement equipment
 Portable electrical and electronic equipment
 Household equipment
 Rack mounting equipment

Presentation

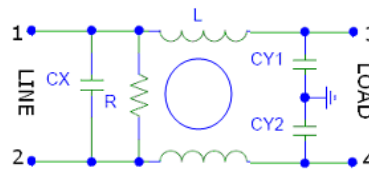
Aluminium

Mounting

Screw Mount or Panel Mount

Termination

Fasten 6.3 X 0.8 mm



How to Order

Part No.	Current Rating (Amps)	Leakage Current (mA)
MF 300-01-X	1A	<1mA
MF 300-02-X	2A	<1mA
MF 300-03-X	3A	<1mA
MF 300-06-X	6A	<1mA
MF 300-10-X	10A	<1mA
MF 300-15-X	15A	<1mA

** For Customised filter Contact our sales department

Insertion Loss

