

Applications

PV Solar .1

DC Application .2

Frequency convertors .3

Stepper motors drives .4

Ups .5

Inverters .6

Description

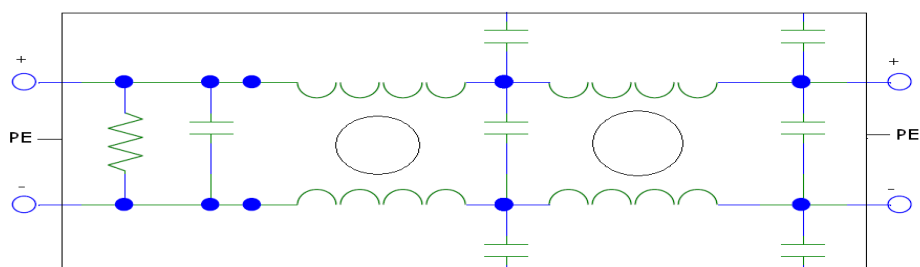
This series filters give superior performance when used in applications with low impedance loads controlling pulsed, continuous and intermittent interference noise and where high levels of mains borne interference are present.



Technical Specification

| Part No. | Rated Current (Amps) | Style | Termination |
|-------------|----------------------|-------|---------------|
| MF 610 - 01 | 1A | SO | Fastons/Cable |
| MF 610 - 02 | 2A | SO | Fastons/Cable |
| MF 610 - 06 | 6A | SO | Fastons/Cable |
| MF 610 - 10 | 10A | SO | Fastons/Cable |
| MF 610 - 15 | 15A | SO | Fastons/Cable |
| MF 610 - 20 | 20A | SO | M5Screw/Cable |
| MF 610 - 30 | 30A | SO | M5Screw/Cable |

Circuit Diagram



Technical Specification

Maximum Continuous

Operating Voltage

: Up to 110VDC

Rated Currents

: 1A to 30 A

High Potential test voltage

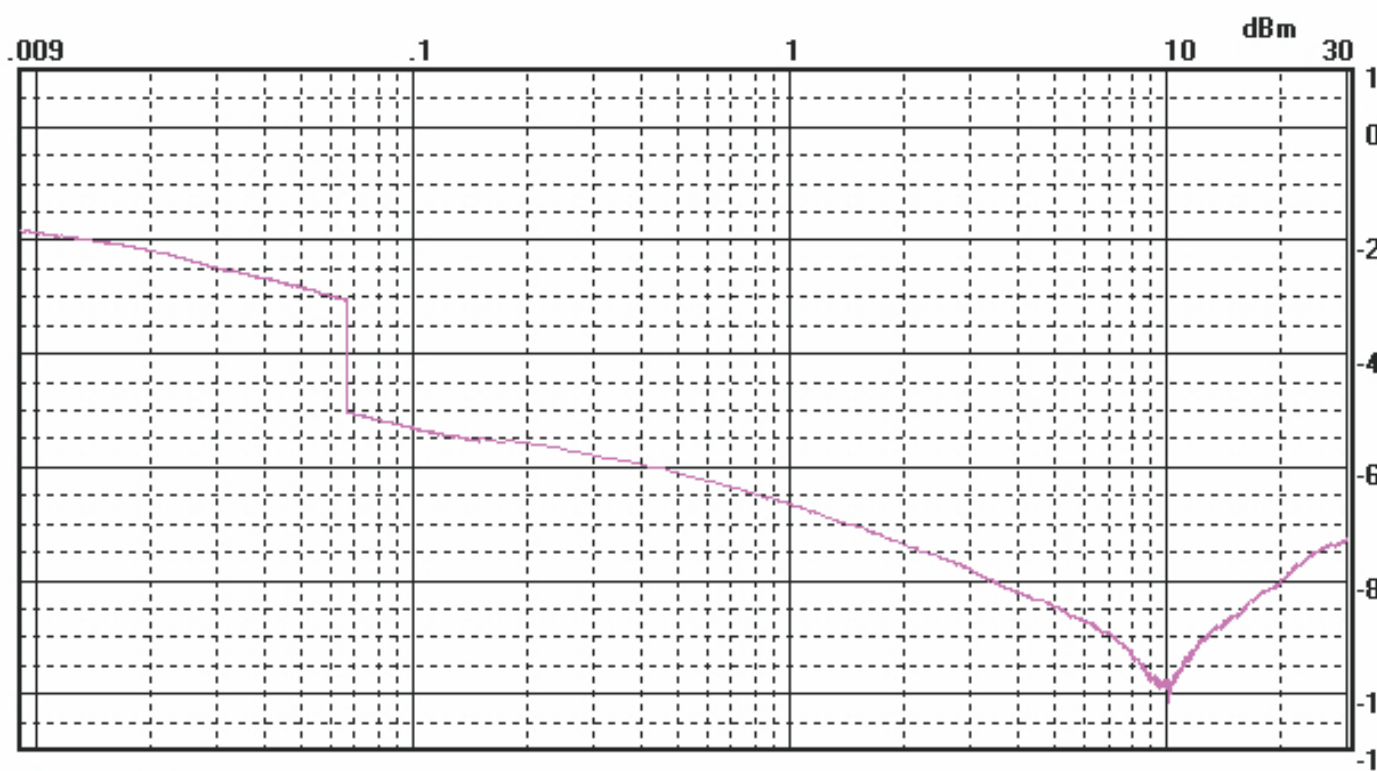
: P to E 1500 VDC, P to N 1414VDC

Overload Capability

: 6 x Rated current for 8 sec

Temperature Range

:-25 °C to 85 °c



Detector: Peak

MF 21010A