

## Applications

PV SOLAR.1

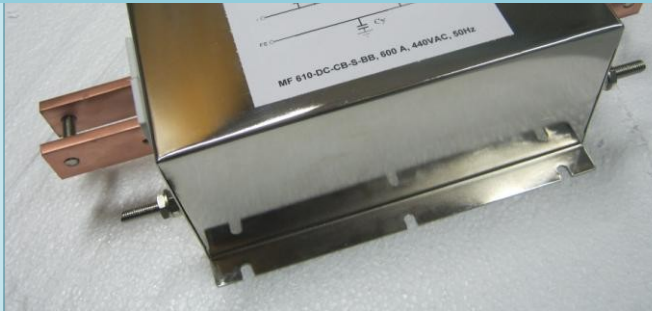
DC APPLICATIONS .2

Frequency convertors.3

Stepper motors drives .4

Ups.5

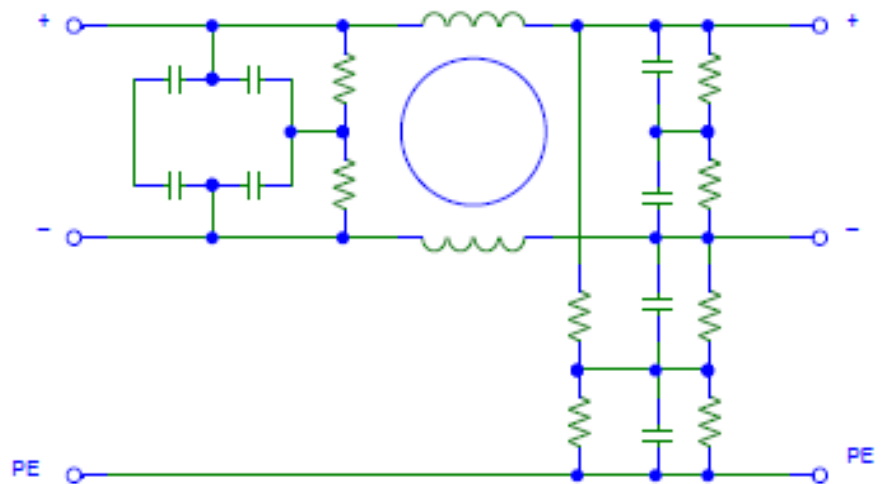
Inverters.6



## Technical Specification

Part No.	Rated Current (Amps)	Case	Termination
MF 610 BB	50A -150A	D1/D2	Connectors
MF 610 BB	250A – 1000A	D3/D4	Bus Bar

## Circuit Diagram



## Technical Specifications

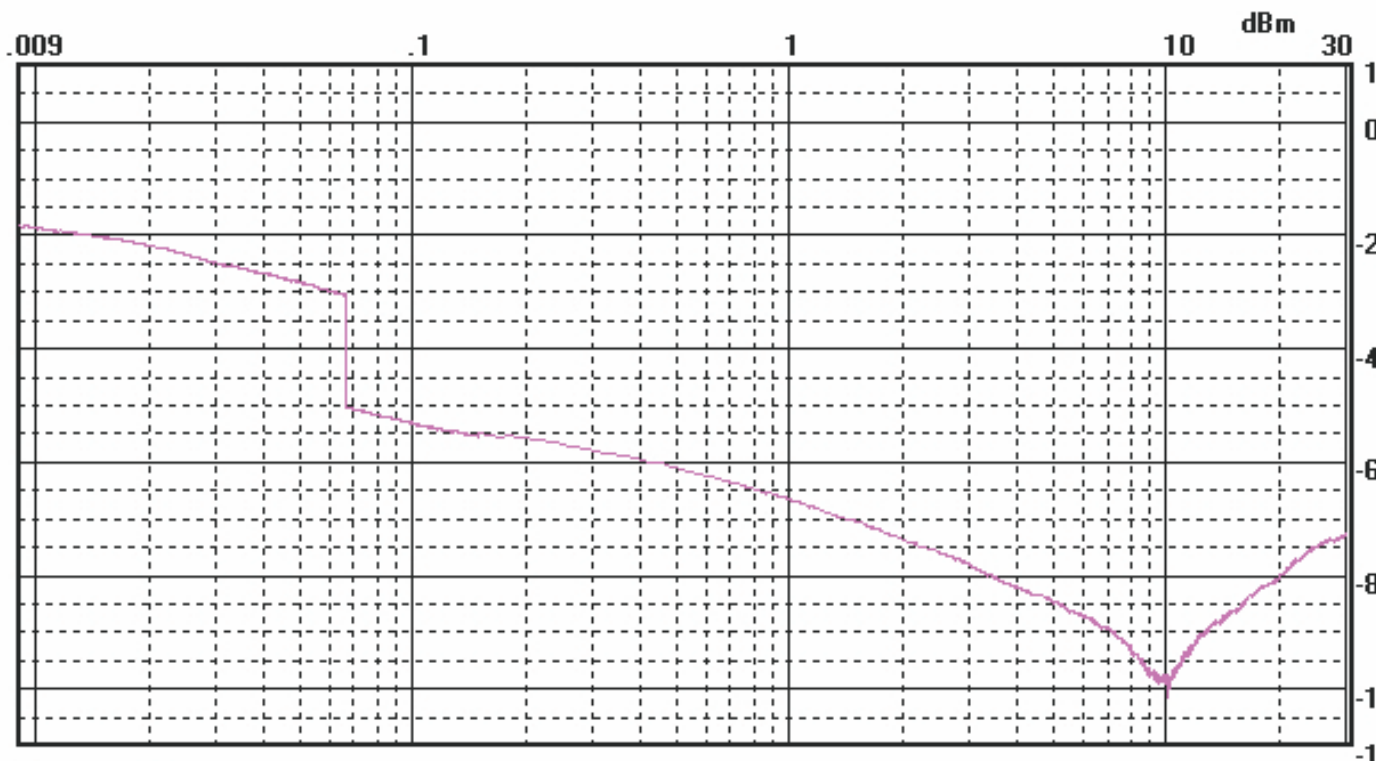
**Max Continuous Operating Voltage**  
**Current rating**  
**Current overload**

**Max.1200VDC**  
**50A - 1000A**  
**4 x rated current at switch on**  
**1.5 x rated current for 1 minute, once per hour**

## High Potential Testing (1 Minute)

**Line to Ground**  
**Line to line**  
**Temperature range**  
**Design meets**

**3600VDC**  
**3000VDC**  
**-25°C to 85°C (25/85/21)**  
**UL 1283, CSA 22.2 No.8 1986, IEC/EN 60939**



Detector: Peak

MF 21010A