

Applications

Motor winding .1

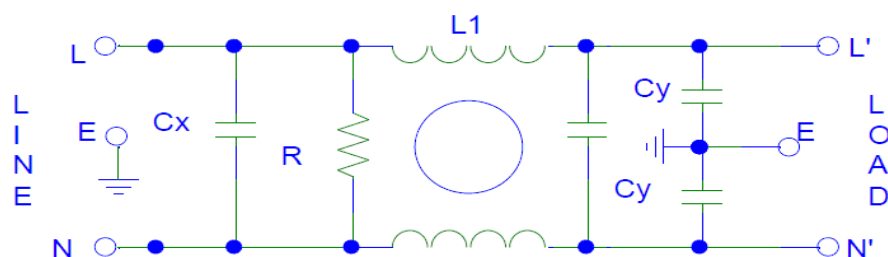
Welding equipment .2



## Technical Specification

Part No.	Rated Current (Amps)	Style
MF 422 1 H	1A	H
MF 422 6 H	6A	H
MF 422 10 H	10A	H
MF 422 15 H	15A	H
MF 422 20 K	20A	K
MF 422 30 K	30A	K
MF 422 40 K	40A	K
MF 422 50 SX	50A	SX

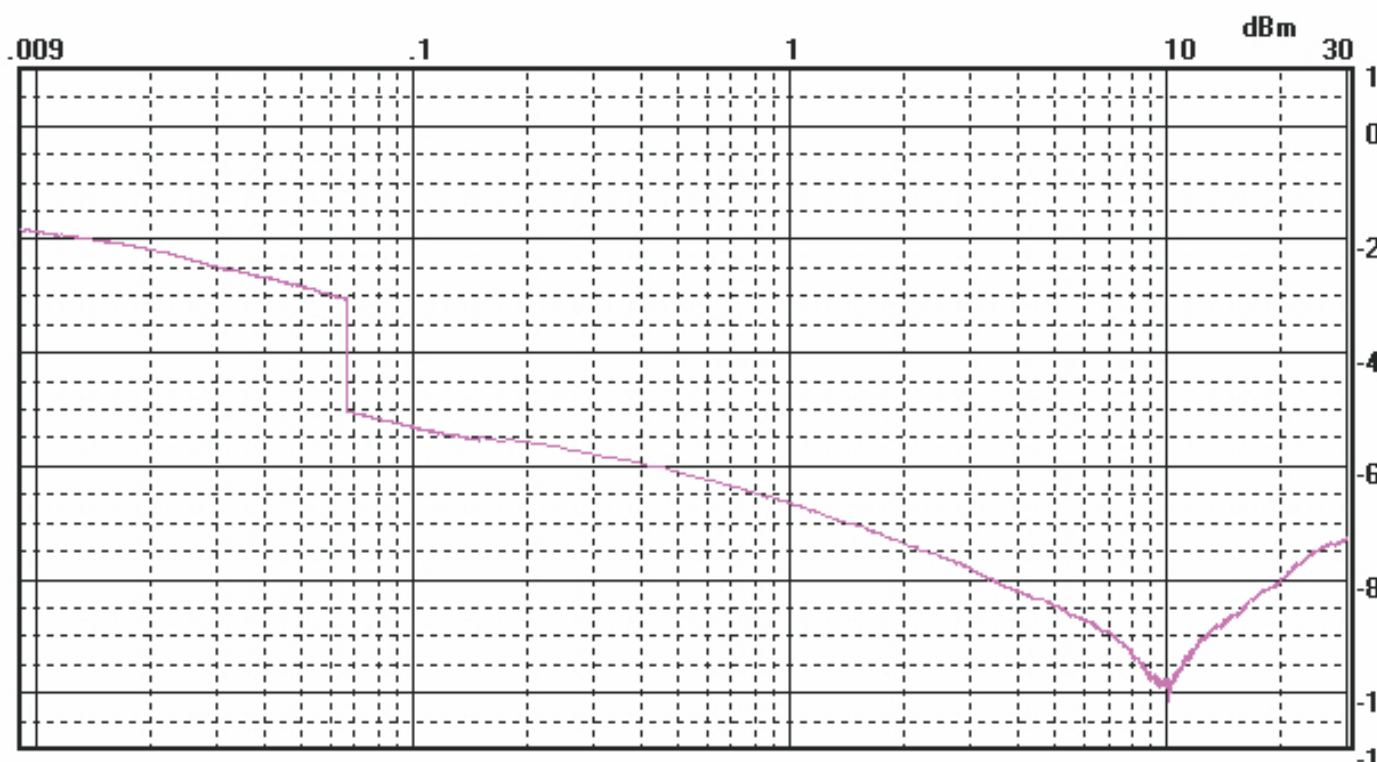
## Circuit Diagram



# Technical Specification

## Maximum Continuous

Operating Voltage	: 440VAC
Operating Frequency	: 50/60Hz
Rated Currents	: 1A to 50 A
High Potential test voltage	: P to E 1880VAC, P to N 1952VDC
Overload Capability	: 6 x Rated current for 8 sec
Temperature Range	: -25 °C to 85 °c



Detector: Peak

MF 21010A