

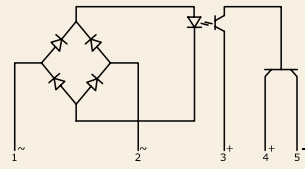
Series: 104/106/107

INPUT MODULES

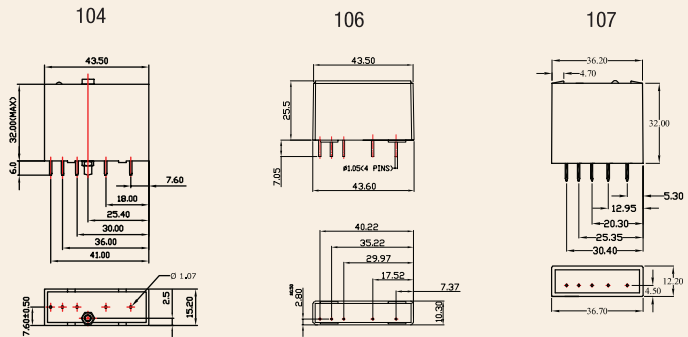
INPUT : AC Control
OUTPUT : DC Control (Open collector)



Schematic



Mechanical Drawing



Salient Features

- Compatible to TTL and CMOS Logic
- LED indication
- Industrial Standard Package with Hold - Down Screw
- PCB Mountable
- Pins are Polarised

ELECTRICAL SPECIFICATION @ TA = 25°C			PRODUCT PART NUMBERS		
PARAMETER	SYMBOL	UNIT	104 AI 032528	106 AI 035028	107 AI 035028

INPUT

Control Voltage Range		Vac	180-280	180-280	180-280
Control Current Range		mA	10	10	6
Pick-up Voltage		Vac	180	180	180
Drop-out Voltage		Vac	15	15	160

OUTPUT

On state Current	I_T	mA	25~30	50	50
Break Down Output Voltage	V	Vdc	30	30	30
On State Voltage Drop	V_T	Vdc	0.4	0.4	0.4
Off State Leakage Current	IDRM	μ A	100	100	100
Turn-On	T-On	ms	20	20	20
Turn-Off	T-Off	ms	20	20	25
Frequency Range	f	Hz	47~63	47~63	47~63
Operating Temp	T Oper	°C	-30 to +80	-30 to +80	-30 to +80

