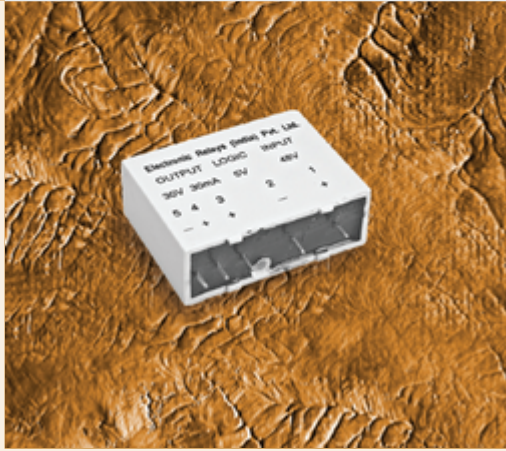


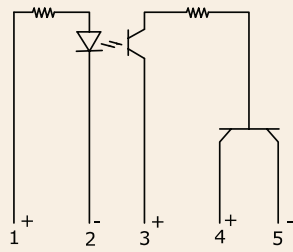
Series:
104/106/107/017

INPUT MODULES

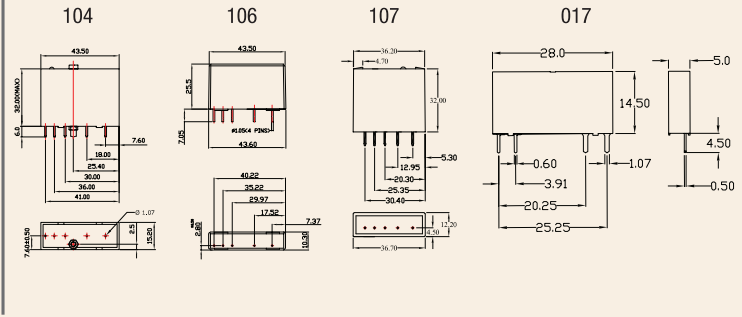
INPUT : DC Control
OUTPUT : DC Control (Open collector)



Schematic



Mechanical Drawing



Salient Features

- Compatible to TTL and CMOS Logic
- LED indication
- Industrial Standard Package with Hold - Down Screw
- PCB Mountable
- Pins are Polarised

ELECTRICAL SPECIFICATION @ TA = 25°C			PRODUCT PART NUMBERS			
PARAMETER	SYMBOL	UNIT	104 DI 032500	106 DI 032500	107 DI 032500	017 DI 032500

INPUT

Control Voltage Range		Vdc	3~32	3~32	3~32	3~32
Control Current Range		mA	10	10	10	20
Pick-up Voltage		Vdc	3	3	3	3
Drop-out Voltage		Vdc	1	1	1	1

OUTPUT

On state Current	I _T	mA	25~30	25~30	25~30	25~30
Break Down Output Voltage	V	Vdc	30	30	30	30
On State Voltage Drop	V _T	Vdc	0.4	0.4	0.4	0.4
Off State Leakage Current	IDRM	µA	100	100	100	100
Turn-On	T-On	ms	5	5	5	20
Turn-Off	T-Off	ms	5	5	5	25
Frequency Range	f	Hz	47~63	47~63	47~63	47~63
Operating Temp	T Oper	°C	-30 to +80	-30 to +80	-30 to +80	-30 to +80

