

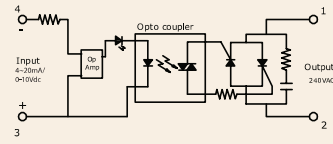
## Series: 020 PAC

**Phase Angle Control SSR (240VAC)  
25~75Amps**

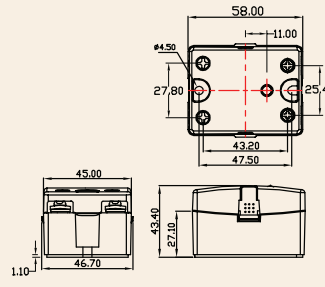
INPUT : 4~20mA/0-10Vdc  
OUTPUT : SCR



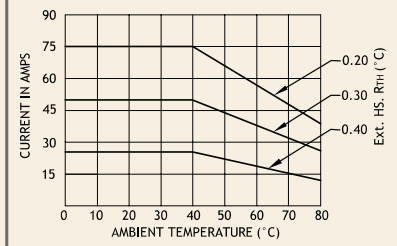
Schematic



Mechanical Drawing



Derating Curve



### Salient Features

- Opto Isolation 2500 VAC
- Input Control 0~10 Vdc or 4~20m Amps
- Built in Power Supply
- Built - In Snubber
- Panel Mountable

ELECTRICAL SPECIFICATION @ TA = 25°C			PRODUCT PART NUMBERS		
PARAMETER	SYMBOL	UNIT	020 PAC 242510/42	020 PAC 245010/42	020 PAC 247510/42
<b>INPUT</b>					
Control Current Range		mA	4~20	4~20	4~20
Control Voltage Range		Vdc	1~10	1~10	1~10
<b>OUTPUT</b>					
RMS on state Current	$I_T$	A	25	50	75
Mains Control Voltage	$V_{rms}$	Vac	24-240	24-240	24-240
Rep Peak Off state Voltage	$V_{drm}$	Vpk	600	600	600
Peak one cycle surge Current (Non-Rep)	$I_{TSM}$	A	300	520	750
On state Voltage Drop	$V_{TM}$	Vac	1.6	1.6	1.6
Off state Leakage current	$I_{drm}$	mA	5	5	5
Critical Rate of Rise Off state Voltage	$dv/dt$	V/ $\mu$ s	300	1000	1000
Holding Current	$I_H$	mA	80	150	200
Fusing Current	$I^2T$	A <sup>2</sup> s	510	1350	2812
Thermal Resistance	$R_{TH}$	°C/W	2.35	1.0	0.6
Turn-On	T-On	ms	1.0	1.0	1.0
Turn-Off	T-Off	ms	10	10	10
Frequency Range	f	Hz	47~63	47~63	47~63
Operating Temp	T Oper	°C	-30 to +80	-30 to +80	-30 to +80

