

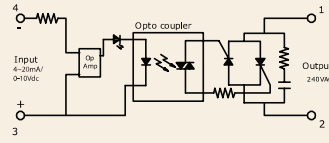
Series: 012 PAC

**Phase Angle Control SSR (240VAC)
75~205Amps**

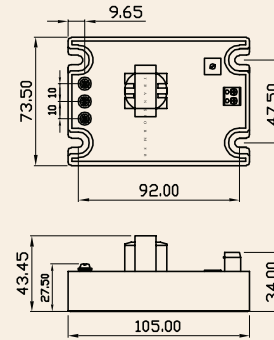
INPUT : 4~20 mA/0-10 Vdc
OUTPUT : SCR



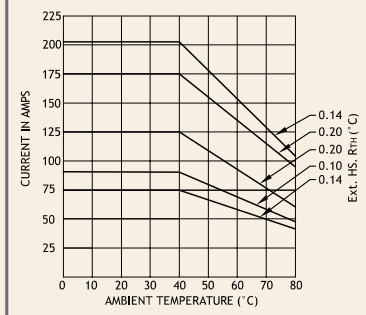
Schematic



Mechanical Drawing



Derating Curve



Salient Features

- Opto Isolation 2500 VAC
- Input Control 0~10 Vdc or 4~20m Amps
- Built in Power Supply
- Built - In Snubber
- Panel Mountable

ELECTRICAL SPECIFICATION @ TA = 25°C			PRODUCT PART NUMBERS				
PARAMETER	SYMBOL	UNIT	012 PAC 247510/42	012 PAC 249010/42	012 PAC 2412510/42	012 PAC 2417510/42	012 PAC 2420510/42

INPUT

PARAMETER	SYMBOL	UNIT	012 PAC 247510/42	012 PAC 249010/42	012 PAC 2412510/42	012 PAC 2417510/42	012 PAC 2420510/42
Control Voltage Range		Vdc	0-10	0-10	0-10	0-10	0-10
Control Current Range		mA	4~20	4~20	4~20	4~20	4~20

OUTPUT

PARAMETER	SYMBOL	UNIT	012 PAC 247510/42	012 PAC 249010/42	012 PAC 2412510/42	012 PAC 2417510/42	012 PAC 2420510/42
RMS on state Current	IT	A	75	90	125	175	205
Mains Control Voltage	Vrms	Vac	24-240	24-240	24-240	24-240	24-240
Rep Peak Off state Voltage	Vdrm	Vpk	600	600	600	600	600
Peak one cycle surge Current (Non-Rep)	ITSM	A	870	870	1000	1350	2000
On state Voltage Drop	VTM	Vac	1.6	1.6	1.6	1.6	1.6
Off state Leakage current	Idrm	mA	5	5	5	5	5
Critical Rate of Rise Off state Voltage	dv/dt	V/μs	1000	1000	1000	1000	1000
Holding Current	Ih	mA	100	100	200	200	200
Fusing Current	I²T	A²s	3780	3780	5000	9100	20000
Thermal Resistance	RTH	°C/W	0.8	0.8	0.7	0.5	0.26
Turn-On	T-On	ms	1.0	1.0	1.0	1.0	1.0
Turn-Off	T-Off	ms	10	10	10	10	10
Frequency Range	f	Hz	47~63	47~63	47~63	47~63	47~63
Operating Temp	T Oper	°C	-30 to +80	-30 to +80	-30 to +80	-30 to +80	-30 to +80

