

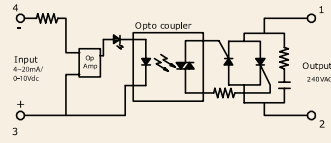
Series: 012 PAC

**Phase Angle Control SSR (240VAC)
10~50Amps**

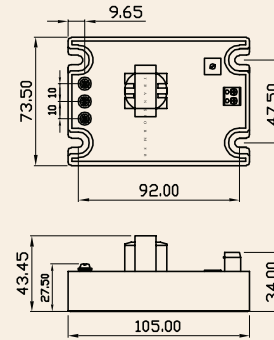
INPUT : 4-20 mA /0-10 Vdc
OUTPUT : SCR



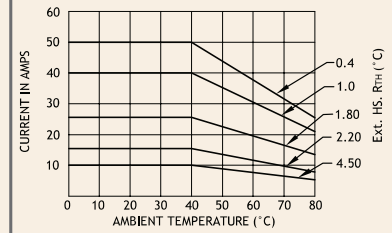
Schematic



Mechanical Drawing



Derating Curve



Salient Features

- Opto Isolation 2500 VAC
- Input Control 0~10 Vdc or 4~20m Amps
- Built in Power Supply
- Built - In Snubber
- Panel Mountable

ELECTRICAL SPECIFICATION @ TA = 25°C			PRODUCT PART NUMBERS				
PARAMETER	SYMBOL	UNIT	012 PAC 241010/42	012 PAC 241610/42	012 PAC 242510/42	012 PAC 244010/42	012 PAC 245010/42

INPUT

PARAMETER	SYMBOL	UNIT	012 PAC 241010/42	012 PAC 241610/42	012 PAC 242510/42	012 PAC 244010/42	012 PAC 245010/42
Control Voltage Range		Vdc	0-10	0-10	0-10	0-10	0-10
Control Current Range		mA	4~20	4~20	4~20	4~20	4~20

OUTPUT

PARAMETER	SYMBOL	UNIT	012 PAC 241010/42	012 PAC 241610/42	012 PAC 242510/42	012 PAC 244010/42	012 PAC 245010/42
RMS on state Current	IT	A	10	16	25	40	50
Mains Control Voltage	Vrms	Vac	24-240	24-240	24-240	24-240	24-240
Rep Peak Off state Voltage	Vdrm	Vpk	600	600	600	600	600
Peak one cycle surge Current (Non-Rep)	ITSM	A	100	160	250	400	800
On state Voltage Drop	VTM	Vac	1.6	1.6	1.6	1.6	1.6
Off state Leakage current	Idrm	mA	5	5	5	5	5
Critical Rate of Rise Off state Voltage	dv/dt	V/μs	400	400	500	500	475
Holding Current	IH	mA	50	50	75	80	80
Fusing Current	I ² T	A ² s	55	144	340	880	3745
Thermal Resistance	RTH	°C/W	2.4	2.1	0.9	0.6	0.86
Turn-On	T-On	ms	1.0	1.0	1.0	1.0	1.0
Turn-Off	T-Off	ms	10	10	10	10	10
Frequency Range	f	Hz	47~63	47~63	47~63	47~63	47~63
Operating Temp	T Oper	°C	-30 to +80	-30 to +80	-30 to +80	-30 to +80	-30 to +80

